

Nally Radio Towers PTY LTD



Fig 2
Incorrect Conduit Position

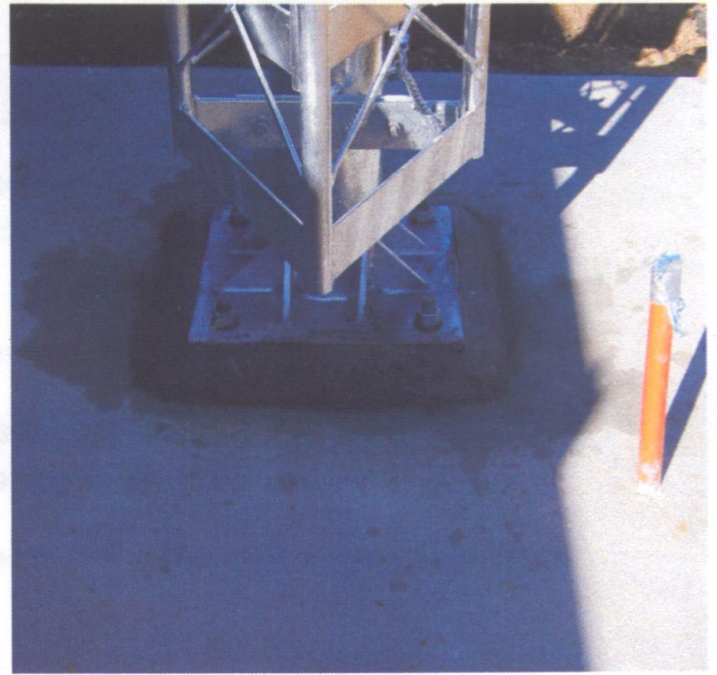


Fig 3
Correct conduit Positioning

Should conduit for cables be required, do not place inside "J" Bolt assembly as in fig 2.

All Conduit must have a minimum of 150mm clearance from the outside edge of "J" bolt assembly as in fig 3.



Fig 4

Both sets of nuts must be above the concrete as in fig 4.

"J" bolt frame must be set level.

Do not alter or remove any nut position on "J" Bolt Assembly before pouring Concrete.